

Acta Orion

DP2 W2W Offshore Support Vessel



- Safe and reliable people transfer by walk to work proven at sea states above **Hs 2.5m**
- Modern type accommodation up to **80 persons** (add-on accommodation possible)
- Ample deck space both sheltered and outside (**>1200m²**)
- **CTV** support base (boat landings, crane and refueling facilities)

Acta Orion

GENERAL

Type:	80 Persons DP-2 multipurpose walk to work vessel
Year of delivery:	2015
Imo No:	9750268
Call sign:	PCEN
Flag:	Dutch flag
Class society:	Bureau Veritas
Classification:	I + Hull + Mach, + Aut-UMS Special Purpose Ship 2008 Unrestricted Navigation Comfort-noise & vib 2 Dynapos AM/AT-R (DP2) Clean ship Open top Green passport

MAIN DIMENSIONS

Length o.a.:	107.95 m
Breadth moulded:	16.0 m
Depth moulded:	9.3 m
Draught design:	5.5 m
GRT:	6293
NRT:	1888
Deadweight:	4000 ton @ 5.5 m
Hold capacity:	3500 m ³
Hold height:	9.8 m
Tween deck hold:	24.4 x 12.0 m (4 hatches)
Tank top hold:	24.4 x 11.5 m (4 hatches)
Upper deck space:	545 m ²
Tween deck space:	402 m ² (wood covered)
Tank top space:	290 m ²
Upper deck load:	2.5 ton/m ²
Tween deck load:	3.5 ton/m ²
Tank top load:	15.0 ton/m ²

MACHINERY & PROPULSION

Main diesel generator:	4 x 1200 kW 1 x 800 kW
Emergency generator:	1 x 150 kW

PROPULSION

Stern thrusters:	2x Azimuthing 1500 kW each
Bow thrusters:	2x Retractable Azimuth 750 kW each 1x Tunnel 485 kW
DP 2 system:	2x DP class II operator workstation 2x DGPS Laser radar guidance 2x Gyro compass 2x Wind sensor 2x Vertical reference unit

SPEED

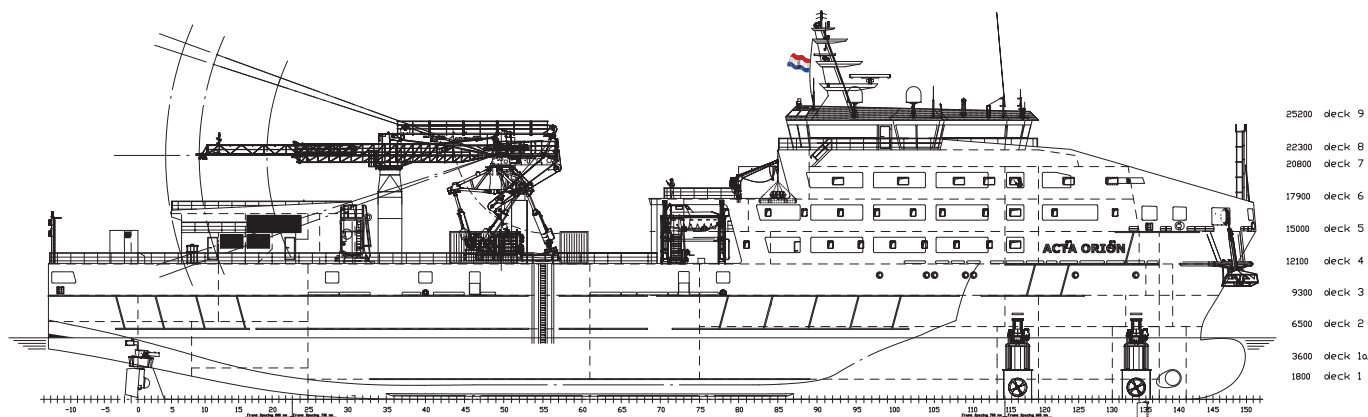
Maximum speed:	12 knots @ 5.0 M draught
----------------	--------------------------

CAPACITIES

Marine gas oil (MGO):	562 m ³
Consumption in DP mode:	3 m ³ per 24 hrs
Fresh water:	127 m ³
Two water makers:	16 ton each per 24 hrs
Water ballast:	3374 m ³
Two sewage treatment plants:	20 m ³

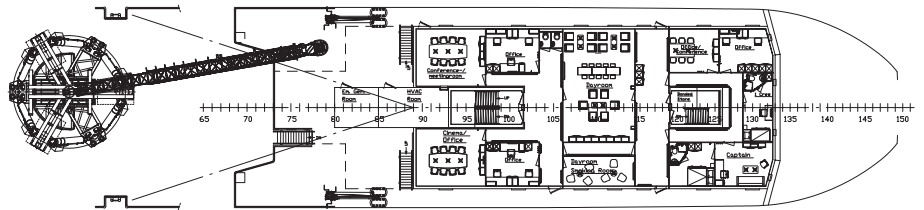
DECK AND HOLD EQUIPMENT

- Motion compensated gangway for personnel and equipment transfer
- Knuckle boom crane (cap. 10 ton @ 17.5 m and 5 ton @ 21,5 m) constant tension function, man riding
- Two fixed boat landings on port- and starboard side for CTV landing
- Removable boat landing for CTV landing
- Hatch cover lifting device with two hydraulic cranes (1.5 ton each)
- Wall sockets for workshop and/or reefer containers
- CTV refueling installation (25 m³ per hour)
- Two survey moonpools (diameter 1.2 m)



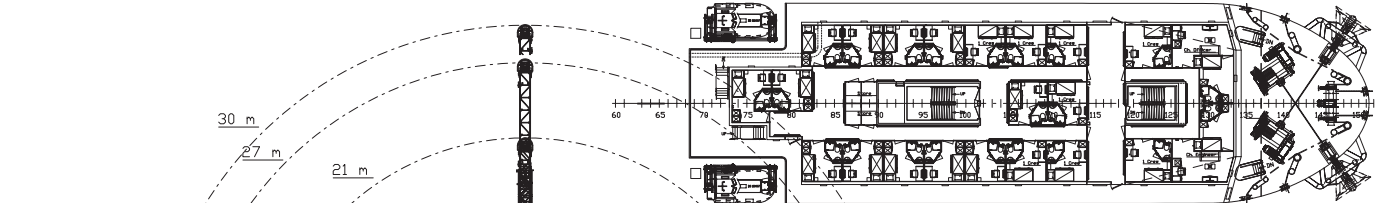
Acta Orion

2 x 1 person



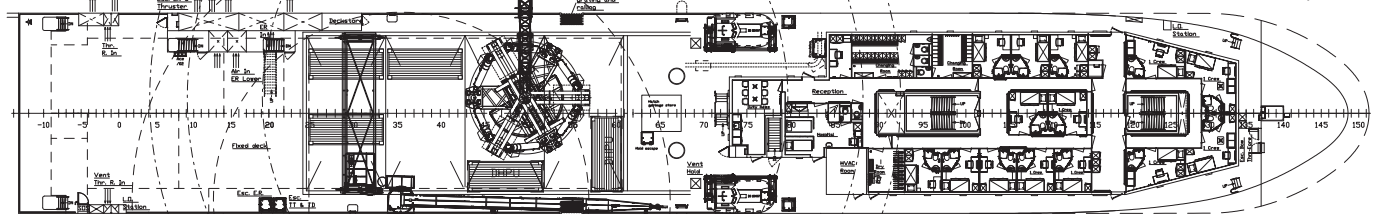
Officersdeck (15000 a.b.)
deck 5

10 x 1 person
12 x 2 person



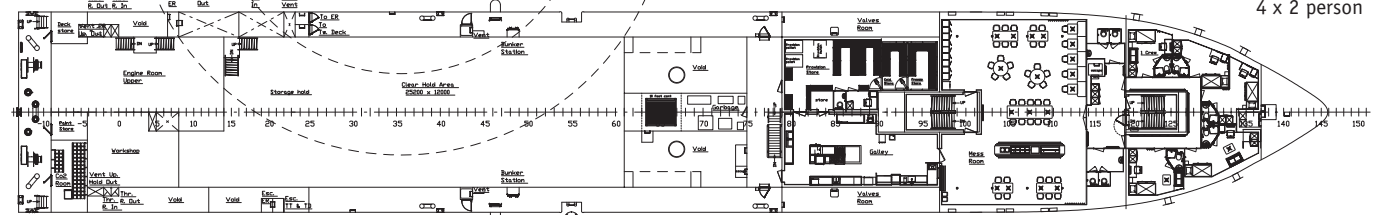
Upperdeck (12100 a.b.)
deck 4

10 x 1 person
4 x 2 person



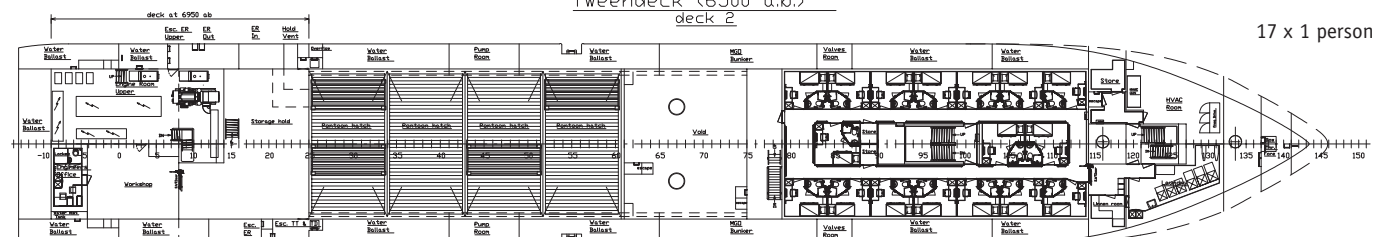
Maindeck (9300 a.b.)
deck 3

1 x 1 person
4 x 2 person



Tweendeck (6500 a.b.)
deck 2

17 x 1 person



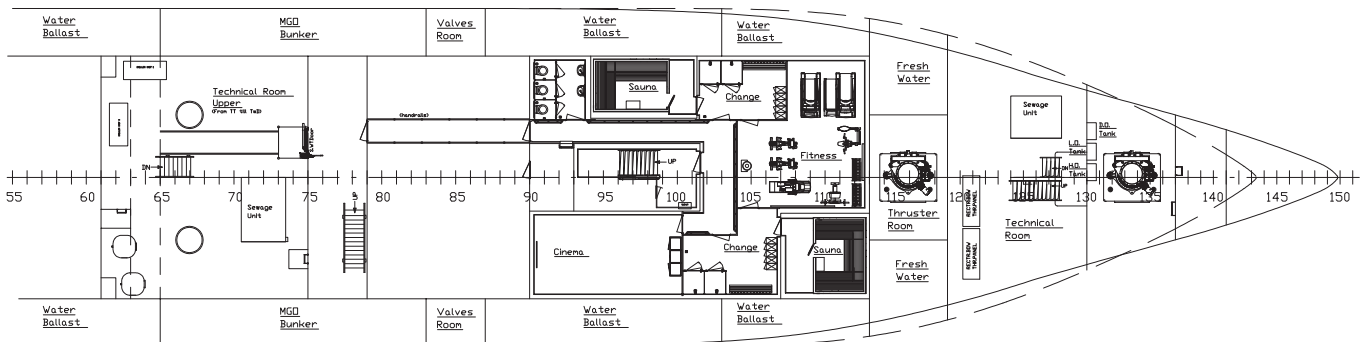
Acta Orion

ACCOMMODATION & FACILITIES

Fully airconditioned

Persons on board:	80 Including crew
Double cabins:	20 Equipped with connected sanitary facilities
Single cabins:	40 Equipped with connected sanitary facilities
Offices:	5 Provided with internet (LAN), external telephone connections and a separate reception area
Cinema:	Multifunctional area with a large TV screen
Hospital:	Centrally located and easy accessible from both outside work area and accommodation
Changing / dry room:	Two separate areas equipped with drying and storage facilities
Client dedicated areas:	Technical store & workshop on tween deck level and a survey office area on the bridge
Mess room / restaurant:	Large mess room also suitable as a conference area and a duty galley at main deck level
Catering:	Hot and cold buffet counter to provide 24 hours service
Day room:	Furnished with comfortable chairs, coffee corner and large TV screen
Smoke room:	Furnished with comfortable chairs and large TV screen
Sauna:	Two separate sauna areas
Fitness area:	Modern equipped gymnasium
Communications:	V-SAT broadband transmit/receive system and a Sat C fully integrated communications system
Internet & tv:	All areas in accommodation have WIFI access for internet; cabins are equipped with television and movie facilities

Entertainmentdeck (3600 a.b.)
deck 1a



Acta Orion

DETAILED RADIO & NAVIGATION EQUIPMENT LIST

- GMDSS: A1, A2, A3
- 2x DGPS JRC JLR-7900
- 2x DGPS (DP system) C-NAV 3050
- 2x Gyro compass (DP system) Alphanon Alphaminicourse
- 2x INMARSAT-C JRC JUE-87
- 2x V-SAT system Intellian V100GX Ku-/Ka-band
- 2x Wind meter Alphanon OMC-116
- 5x Portable UHF Thrane & Thrane Sailor SP3560 ATEX
- AIS JRC JHS-183
- Autopilot Alphanon Alphaseapilot MFC
- BNWAS Alphanon MS421B
- DP(2) system Navis
- Dual-ECDIS Transas Navi Sailor 4000 ECDIS MFD
- Echo sounder JRC JFE-341
- Epirb McMurdo E5
- Fixed UHF Motorola GM360
- Gyro compass Alphanon Alphaminicourse
- Laser radar Guidance Navigation Systems Cyscan
- LRIT JRC
- Magnetic compass Alphanon Alphabinnacle
- MF/HF JRC JSS-2150 150W PEP
- Navtex JRC NCR-333
- Portable VHF GMDSS Thrane & Thrane Sailor SP3520
- SART McMurdo Smartfind S5 AIS SART
- S-band radar JRC JMR-9230-SW
- Speed log JRC JLN-205 MKII
- SSAS JRC SSA ADD ON
- TVRO system Intellian T110W
- VDR JRC JCY-1900
- VHF JRC JHS-770S
- X-band radar JRC JMR-9210-6X
- PEPLINK MAX HD2 LTE router with 2 built-in 3G/4G modem
- JRC JUE-251 Inmarsat-F Fleet Broadband



Details are believed to be correct but can not be guaranteed and are subject to change (04-2016)